



From Ashes to Art

From the ashes of yesterday, the promise of tomorrow

My sincere thanks to all those who contributed to the Digital Archive for Arts Recovery. Without the generous contribution of these artists, writers, poets and photographers this historic archive of the Kinglake Ranges arts-led recovery from the 2009 bushfires would not have been possible.

Michelle Bolmat



'A Better Day Concert' – May 2009 -Including the 'Arts in the Ranges' exhibition.

On Sunday 17 May 2009 KRPVAA artists, writers and performers joined together to celebrate the 'A Better Day Concert' an affirmation that the arts in Kinglake were still alive and flourishing after the devastation of the Black Saturday bushfires. All of the artists were affected in some way by the bushfires and told their story through musical performances, displays of poetry and artwork created as a response to the fires.

The event began at 10 am in the Kinglake big marquee with an exhibition, 'Arts in the Ranges' with local artists displaying works created in response to the bushfires. The artists gave demonstrations throughout the day and local children were invited to join with the artists to express their response to the bushfires through the creation of art.

Regional Arts Victoria was instrumental in helping to source much-needed display stands for the visual artists. In the interim fellow artist Libby Webster of Tallarook generously offered the use her stands.

The newly-formed Kinglake Phoenix choir initiated the live performances, followed by a musical line-up which included Steve Doyle, The Senile Delinquents, Jane & James, Lunchbox Legends and Brett (Dusty) Pollock. The live entertainment ran concurrently with the art show until 4 pm, after which the first 'Open Mic' jam session for 2009 commenced. A drum kit and P.A. was provided on site for local youth to participate in the making of music. CD's and artwork created in response to the bushfires stimulated much interest and sold well. Global Care provided a sausage sizzle for the event which turned out to be a fun day enjoyed by well over two hundred locals and visitors.

Grace Paleg, former Kinglake resident and multi-award winning artist donated a 1200 X 800cm painting titled 'New Life'. The proceeds from the raffle of the painting were given to KRPVAA as Grace's contribution to the Kinglake bushfire recovery effort.

The 'Better Day' concert provided an opportunity for all to experience a sense of positive development and community spirit after the catastrophic events of February 2009.



The Big Sing – June 2009

The marquee enabled two further events, a second art and live music show and the 'Big Sing', a musical extravaganza held on Sunday 28 June to provide support for bushfire-affected residents. It showcased several visiting choirs including The Chocolate Lillies, The Sparkles, Sing Australia, the Whittlesea Choir and introduced the newly-formed Kinglake Phoenix Choir under the direction of local entertainer and organiser, Karen Osterried. The Kinglake Phoenix Singers were the crowd favourites with their performances of *Under the Boardwalk*, *Eight Days a Week* and *The Lion Sleeps Tonight*.

The coordinator, Karen Osterried, organised The Big Sing with the help of other choirs and a grant from Regional Arts Victoria. It was a participative event with the audience invited to join with the choirs in several sing-alongs. Support from KRPVAA singers/songwriters and musicians helped to make the 'Big Sing' an even greater success as the public responded to an invitation to 'get out of the shower, sing with friends, listen, learn and have fun'.

The Kinglake Phoenix Choir performed at many post-bushfire recovery events:

Kinglake Art Shows

Kinglake 'Reconnect' festival

Memorial services including Zinc Stadium

'Emergence' Exhibition and performance at Federation Square, Melbourne.

Kinglake Community Carols

Carols for Aged care facilities

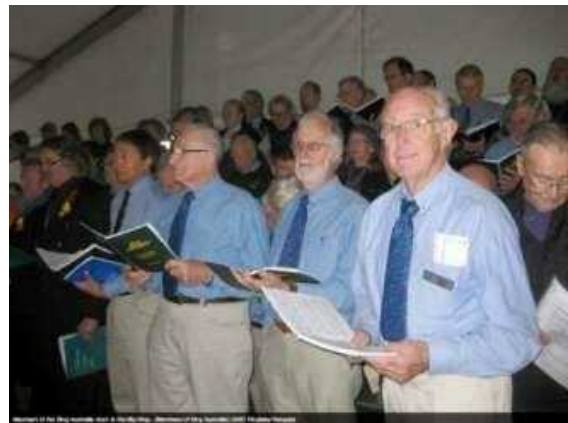
Music workshops including, drumming, acapella, the Melbourne Playback Theatre Company.

Combined concerts with Melbourne Male Welsh singers.

'Into the light' Festivals.



The Big Sing etc.



Renewal – August 2009

KRVPAA's 2009 Exhibition 'Renewal' held at Lawson's in Kinglake, August 2009 was the first formal art exhibition held in Kinglake after the fires and was attended by parliamentary dignitaries, representatives from the Shire of Murrindindi, Regional Arts Victoria, DHS, VBRRRA, DHS Global Care, supporting community groups and representatives from the corporate sector. The aim of the event was to showcase the work of local artists and to foster a sense of community connectedness after the bushfires. The artists made a valiant effort to produce artworks for this event and many displaced artists made the journey back to Kinglake especially for this exhibition.

Entries from fifteen local artists included oil, watercolour, pastel and silk paintings, mixed media artwork, ceramics, poetry, photographs and jewellery. The majority of these were produced in response to the bushfires and included artworks made from material collected after the fires.

The exhibition was officially launched by Councillor Lyn Gunter, Mayor of Murrindindi.

Five major awards were co-sponsored by Bendigo Bank and Mountain Monthly. The event was judged by Thel Cardwell, president of Plenty Valley Arts Society and the Australian Guild of Realist Artists (AGRA).

The exhibition was funded by a Regional Arts Victoria ARQ grant. RAV CEO Lindy Allen spoke at length on the importance of art and culture in communities and the potential for the arts to have a positive effect on communities recovering from major trauma. RAV had appointed Marilyn Gourley as the Murrindindi Arts Recovery Project Officer. Her support and guidance contributed greatly to the success of the exhibition, as well as many other post-bushfire arts projects, including 'Emergence'.

The exhibition opened to the public on Saturday 22 and Sunday 23 August and was patronized by a steady stream of visitors. Overall the exhibition received in excess of three hundred visitors. Support from KRVPAA singers, songwriters and musicians helped to make the event an even greater success as the public responded to music and art created in response to the fires.



Reconnect – October 2009

On Saturday 3 October 2009 KRVPA visual artists joined with the Alliance's musicians and singers to reconnect and celebrate with the Kinglake community. The 2009 Kinglake 'Reconnect' community event in October 2009 attracted more than 3000 visitors who had been invited to come to Kinglake and see for themselves the resilience and strength of the Kinglake Ranges community. KRVPA Musicians, singers, performers and artists worked together to produce an event aimed at uplifting the community and recognizing the district's emergency services volunteers and local police.

The artists produced a range of artworks ranging in style from contemporary to traditional and featuring a variety of mediums from acrylic, oil and pastel to stunning silk paintings and dramatic leather artwork. Yea Rotary brought their display stands to Kinglake to enable the artists to display their paintings while old friends, Global Care, helped with everything from assembling the stands and assisting with the hanging of artworks to the unpacking and arranging of hundreds of tables and chairs.

For the first time students from Whittlesea Secondary College joined Kinglake artists and students in exhibiting their artworks. Kinglake's 'Rodagraphics' sponsored the 'First Prize', while Victorian Artists' Suppliers in Eltham kindly donated the second prize and third prizes.

One of the highlights of the artwork display was a magnificent ice sculpture brilliantly executed and generously donated by 'Ice Designs'. During the afternoon Glenn Smith and his partners worked for several hours to produce this glittering two-meter-tall crystal of ice. The sculpture was floodlit during the night and became a brilliant focal point for the festivities - the jewel in the crown of an exciting and fun-filled day. The event attracted over 3000 visitors.



Toolangi Festival Art Exhibition - October - November 2009

Toolangi's stunning Discovery Centre was the venue for this art show, which provided another opportunity for bushfire-affected artists to describe their story of survival and recovery through the making of art.

The event showcased many Kinglake Ranges artists including wood sculptor, Glenn Barlow. Glenn subsequently conducted post-bushfire woodcarving demonstrations at the Kinglake West Hall and enhanced the streetscape of the Kinglake township with wood sculptures such as 'Wally' the wombat.

Glenn had an illustrious history of service with the Kinglake West CFA, including on Black Saturday. Among the accolades are the Chief Officer's Unit Citation for Courage in 2012, the National Emergency Medal for the 2009 fires and a 10-year service medal in 2016.

For the children of Kinglake West, Glenn performed the role of Santa on the back of the CFA truck for the Christmas run for many years, dishing out endless festive cheer. The totem pole erected at Mason's Falls post-fires was also one of Glenn's creations.

Glenn succumbed to Parkinson's in August 2021.



Glenn Barlow



Toolangi Discovery Centre



Toolangi Discovery Centre



Christmas Carols 2009 – Phoenix Choir

In 2009, Karen Ostenried, with supporting services from the Kinglake community, knew that this first Christmas would be very hard on survivors, so every effort was made to invite as many community members as possible to the carols. Working with the Kinglake Ranges Neighbourhood House and many volunteer organisations such as the Lions club, CFA, and the SES and with the aid of a recovery grant, the organisers were able to secure the Salvation Army Band as the supporting orchestra. The Whittlesea Township Choir who had helped the Phoenix Singers since inception were also on hand, as were many professional and amateur musicians and performers from Kinglake. The organisers were able to utilize the newly opened 'Kinglake Temporary Village' with a community kitchen and lounge area. This allowed everyone to meet and mix in relative comfort and not be subject to the fickle mountain weather. To this day it was one of the largest audiences the Phoenix Choir experienced with approximately 300 people attending. Of course it was very emotionally charged being the first Christmas after losing loved ones, but the spirit was definitely of togetherness and love. It was like a beautiful vigil, not only for the meaning of Christmas, but also for those lost. It will never be forgotten. The Salvation Army continued to be a valuable addition to the Christmas Carols for the following six years.



Victorian Bushfire Royal Commission - 2009/2010

The KRVPA established a close working relationship with the 2009 Victorian Bushfires Royal Commission which resulted in KRVPA visual artists' works being featured at the Commission's gallery from September 2009 until May 2010.

The 2009 Victorian Bushfires Royal Commission presented its Interim Report to the Lieutenant Governor of Victoria, the Honourable Marilyn Warren, AC on Monday 17 August. The striking design on the cover page of the report was taken from a painting by KRVPA artist Linda Haggar. Linda's painting, 'Mountain Ash', was first displayed at the 'Artists Rising' combined event which took place in the 'Big Tent' in Kinglake over the 2009 Easter weekend. This superbly crafted work showing an aerial view of the devastation wreaked by the bushfires has now become an integral part of the recorded history of one of the most devastating events in Australian history.



Linda Haggar – Mountain Ash



Linda Haggar - My Backyard Burns-



Michelle Bolmat – Phoenix Rising

Arts Margaret River - 2010

In January 2010 KRVPA visual artists joined Arts Margaret River in Western Australia in a combined exhibition, 'Where's Home'. This exhibition helped to forge a bond of friendship between two diverse art groups who came together in a spirit of cooperation and mutual support.

The following is a narrative by Heather Locke OAM who was President of Arts Margaret River at the time of the 2009 bushfires and who later received an OAM for 'services to rural arts'.

"The terrible Victorian Black Saturday fires on 7th February 2009 touched us all in Margaret River and through generous donations from our Arts MR audience we were able to form a close connection with Kinglake Victoria by supporting their arts group and eventually staging a 'Where's Home' exhibition. Kinglake Arts Alliance had lost everything and all members knew someone from the 73 who lost their lives.

Jack Hough, a local pastor, had gone as a volunteer and put us in touch with Michelle Bolmat. Michelle was a member of the City of Whittlesea's reference committee which provided artistic support for the 'INTO THE LIGHT' festival, a community event developed using art to explore ongoing recovery issues in the region following the 2009 Black Saturday Bush fires. The inaugural festival was in 2011 and in response to community needs continued for a further five years.

ArtsMR sent \$1,000 to the Kinglake Arts Alliance and this was used to buy paint, brushes and canvasses. Artists needed to paint, either because it was their livelihood, or a means of expressing their reactions to this disaster – or '*just something to do to stop thinking about what happens next*'.

We kept in touch and when it was decided to put in an Art Gallery in the foyer of the Cultural Centre in 2010 we decided the first exhibition would be a joint one with Kinglake – 20 small standard-size pieces from each group of artists with the theme '*Where's Home?*'

As a year had passed since the fires there was also jewellery made from silver castings of the burnt leaves and beads from the myriad melted glass bottles. We had a wonderful sold-out opening night. It was instantly obvious where each piece had been painted – scenes of brown, black and red utter devastation versus our green SW homes. Our local artists were so touched by the Kinglake artists' depiction of their loss that they generously donated all money back to Kinglake - \$5,000 in total."

Heather Locke OAM

Arts Margaret River

Western Australia



'Where's Home' Exhibition Margaret River



Heather Locke OAM

Arts Margaret River Cont.



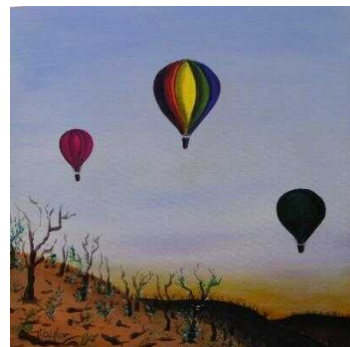
Heather's commemorative silver leaf



Michelle Stewart's jewellery at Margaret River



Catherine Blakey 'And the Trees Lay Down'



Jeannie Taylor – 'Onwards & Upwards'

World Trade Centre Exhibition - 'Reflection and Regeneration' - 2010.

In March 2010 KRVPA artists were among a select few to be chosen from over one hundred entries for the 'Reflection and Regeneration' exhibition at the World Trade Centre. This was another step in the recovery process for Kinglake Ranges' artists affected by the Black Saturday bushfires.

Police Chief Commissioner Simon Overland opened the 'Reflection & Regeneration', exhibition in the atrium of the World Trade Centre. It featured more than 60 photographs and artworks from 10 artists affected by the fires.



'Heat' - Naomi Benheim



Trilogy 1 – Marlyse Carroll

Kinglake Produce & Artisan Market

KRVPAA organised ten Kinglake Produce & Artisan Markets providing the community with a local event to display and sell their art creations and local produce.

Kinglake Produce & Artisan Market
1st Anniversary

SUNDAY 28TH NOVEMBER
9am - 2pm
In the heart of the Kinglake Township

To celebrate our first birthday, and our last market for the year, the November market will be a day of celebration with performances from local entertainers and kids activities including jumping castles, animals and much more! There will be a variety of stall holders supplying an assortment of goods, so our November market is a great opportunity to get a head start on your Christmas shopping!

Entry is via gold coin donation with all proceeds being donated to the Kinglake SES.

Come along and help us celebrate our first birthday and sample the fine products of the Kinglake Ranges!

Kinglake Produce & Artisan Market
www.kinglakemarket.com.au

Yarra Valley Open Studios - Healesville September 2010.

Kinglake artists and one Marysville artist participated in the Yarra Valley Open Studios event in September 2010 at 'The Space Gallery', Healesville. Most of the works on display had been produced in response to the bushfires and artists were on site to talk about their artwork and the history behind their creation.

Exhibiting artists:

Catherine Blakey – Leather Artwork

Michelle Bolmat – Realist, Pastels, Oils, Acrylics & Sketches

Marlyse Carroll – Silk Paintings

Gay Chatfield – Mixed Mediums

Linda Haggart – Contemporary & Abstract Acrylics

Kate Jones - Contemporary Acrylics, Mixed Mediums

Brett Pollock – Contemporary Acrylics

John Sharp – Etchings

Michelle Stewart – Jewellery

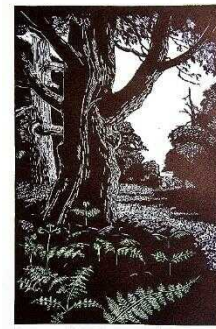
Marysville artist Tanya Moncriess – Pastels, Wire Sculptures



Renovatio - John Sharp



Remnants - Gay Chatfield



Rejuvenation – John Sharp



Leather Sculpture - Catherine Blakey –



Tree of Life – Marlyse Carroll



From the ashes of Black Saturday, a journey of truth and recovery

4 – 13 February 2011

The original concept of this project was formed and initiated by the Kinglake Ranges Visual & Performing Arts Alliance (KRVPA) and then developed with the help and support of the Shire of Murrindindi and Regional Arts Victoria. The Arts Alliance felt that it was crucial that communities affected by the 2009 bushfires be given the opportunity to describe their journey of recovery and say two things to the rest of Victoria:

"The work is not over...and Thank you."

The exhibition and associated events took place from 4 to 13 February 2011 at Federation Square and the Arts Centre. The project coincided with the second anniversary of Black Saturday and promoted the contribution of the arts to the recovery process. Emergence was a unique opportunity to refocus the second anniversary in a metropolitan context and to provide a creative space for artists to share their responses to disaster and adversity. The event promoted the contribution of the arts to the recovery process and recognition of the multifaceted nature of the problems that artists from bushfire-impacted communities face in recovering from such events.

All of the exhibiting artists had been affected in one way or another by the bushfires. Many had lost everything; equipment, art supplies and personal records of their artistic journey. Many were so traumatised that they temporarily lost the will to continue their artistic practice.

Communities were fractured and disorientated. 'Emergence' gave artists, and by extension their communities, the means to express deep and troubling emotions, to re-establish a sense of identity and to foster the development of new avenues of collaboration and participation between artists and their communities.

Emergence encouraged collaboration between artists, the wider community and local governments and in doing so, contributed to a positive arts-led response to the 2009 bushfires. The Emergence project emphasised the importance of continued reflection upon the impact of recent catastrophic events and the development of strong, vibrant and united arts communities.

The artists of Victoria took this opportunity to bring their artistic journey of truth and recovery to the people of Melbourne; to demonstrate the triumph of the human spirit over tragedy and loss and to provide a focus on positive and creative outcomes following Black Saturday for the people of Melbourne.

The Emergence project was developed and implemented through the efforts of the Emergence working group which consisted of representatives from KRVPAA, RAV Arts Recovery Projects Officer Marilyn Gourley, the Shire of Murrindindi, the Salvation Army representing the Sony Youth & Music Project and ecological artist, Lloyd Godman. The expertise of the working group, together with the overwhelming support from all stakeholders was the major contributing factor to the success of the project.

The event included a nine-day visual art exhibition, a showcase production by the Sony Project, an evening public concert, youth performances, dance, a self-transforming video display by renowned photographer Lloyd Godman, rolling visual art images on the big screen, three choirs (the Kinglake Phoenix Choir, the Bendigo Choir and the Chocolate Lilies), the Triangle steel pan band, blacksmith demonstrations by the artisans who created the bushfire bronze leaf memorial tree, informal talks by the artists and poetry readings.

The exhibition was opened on Friday 4 February by Bruce Esplin and featured numerous guests including representatives from the Kinglake Ranges Visual & Performing Arts Alliance, Arts Recovery Projects Officer Marilyn Gourley, politicians, CFA, SES, Kinglake CERT and other emergency services representatives, mayors and CEO's from across the relevant shires, representatives from Federation Square, the Arts Centre, Arts Victoria, Regional Arts Victoria, Sony Foundation, Salvation Army, and the State Library.

The event consisted of four major components:

Performance

- Multiple performances which took place at the Arts Centre and Federation Square Main Stage

A curated exhibition

- Featured at the Federation Square Atrium containing writings, poetry, visual arts and sculptural work

Screen

- A presentation of photography, still & moving images on the Federation big screen.

Talks

- Artist talks that facilitated the collaboration between metropolitan and regional artists and school students working with themes of fire.

Objectives:

- To mark the second anniversary with a focus on creative recovery processes.
- To unite the various bushfire-affected communities through art.
- To promote the role of the arts and local artists in the recovery process.
- To create a space for artists across generations, towns, urban and rural to explore and share creative responses to disaster and adversity.
- To refocus the bushfire recovery process with local, state and national audiences in mind.
- To produce a publication/catalogue as a means to represent a range of work.

The Emergence project was developed and implemented through the efforts of the Emergence working group which consisted of representatives from KRVPA, RAV Arts Recovery Projects Officer Marilyn Gourley, the Shire of Murrindindi, the Salvation Army representing the Sony Youth & Music Project and ecological artist, Lloyd Godman. The expertise of the working group, together with the overwhelming support from all stakeholders was the major contributing factor to the success of the project.

The event included a nine-day visual art exhibition, a showcase production by the Sony Project, an evening public concert, youth performances, dance, a self-transforming display by renowned ecological artist Lloyd Godman, rolling visual art images on the big screen, three choirs (the Kinglake Phoenix Choir, the Bendigo Choir and the Chocolate Lilies), the Triangle steel pan band, blacksmith demonstrations by the artisans who created the bushfire bronze leaf memorial tree, informal talks by the artists and poetry readings.

The exhibition was opened on Friday 4 February by Bruce Esplin and featured numerous guests including representatives from the Kinglake Ranges Visual & Performing Arts Alliance, Arts Recovery Projects Officer Marilyn Gourley, politicians, CFA, SES, Kinglake CERT and other emergency services representatives, mayors and CEO's from across the relevant shires, representatives from Federation Square, the Arts Centre, Arts Victoria, Regional Arts Victoria, Sony Foundation, Salvation Army, and the State Library.

The 'Emergence' visual art display remained at Federation Square until 13 February 2011 and then moved to DHS in Latrobe Street from March until early April. It was then taken to Whittlesea with support from the City of Whittlesea and the Whittlesea Tennis & Cricket Club.



Kinglake Phoenix Singers – Federation Square



Kinglake Global Care - Federation Square



'A Sense of Place' – November 2012

Friday 16 November 2012 was the grand opening of the KRVPA/ Rotary Club of Kinglake Ranges inaugural art exhibition, 'A Sense of Place', held at the Kinglake West Hall, Saturday 17 and Sunday 18 November 2012.

KRVPA and Rotary formed a partnership to produce their first combined exhibition to showcase the works of artists from local and surrounding areas. This event was a fundraiser for both organisations; Rotary aimed to fundraise for scholarships for local primary students while KRVPA used funds raised in their ongoing support of local artists.

The exhibition was opened by former Emergency Services Commissioner, Bruce Esplin. The artworks featured covered a wide range of genres from paintings to sculpture, photography, glass, ceramics, jewellery and wood carvings.

There were ten prize categories for the exhibiting artists, with the major award being 'Best Exhibit in Show'. This prize, to the value of \$1,000, was generously sponsored by Freemasons Victoria in its continued support of the Kinglake Ranges.

Other major sponsors and supporters include the Shire of Murrindindi and an anonymous benefactor, plus many local businesses.

KRVPA & Rotary Club of Kinglake Ranges
Proudly present their
inaugural combined
Art Show
'A Sense of Place'
16 to 18 November 2012

Kinglake West Mechanics Institute Hall
1055 Whittlessea-Kinglake Road, Kinglake West.

The exhibition will be opened by former
Emergency Services Commissioner, Bruce Esplin
Opening night Friday 16 November, 7:00pm onwards.

Scrumpious supper and complimentary drinks
Cost: \$15 per head. Student/concession \$10

This event is a fundraiser for both organisations.
Rotary's aim is to fundraise for scholarships for local primary school students.
KRVPA will use raised funds in their ongoing support for local artists.

Entries include paintings, glass & ceramics, sculpture, jewellery,
woodcut, wax, paper and mixed media photography are invited.

The Best Exhibit in Show will be awarded a prize of \$1000.
Sponsored by Freemasons Victoria

with additional prizes awarded over multiple categories.

For further information and entry forms please contact the art show coordinators
Marilyn Edrington (KRVPA) 081 6758564, M. Goff 081 681
Joey Byles (Rotary) 0482 251411

Kinglake, Australia
www.kinglakewestmechanicsinstitute.com.au

Kinglake Ranges artists worked in collaboration with several organisations including Regional Arts Victoria and the City of Whittlesea, taking part in projects such as 'Illuminated by Fire' and 'Into the Light'.



'Into the Light' poster



'Illuminated by Fire', Portland. Artist: Carmel Wallace. Photo: Lindy Allen

Kinglake children joined with Kinglake Ranges artists to create lanterns for the City of Whittlesea's 'Into the Light' event. They proudly carried their creations in the lantern parade at the Whittlesea showgrounds while Kinglake Ranges musicians and artists collaborated in the musical performance and art show.



Lantern making for 'Into the Light'

Lyrebird Trail

In 2014 Grade 5/6 students worked with a Parks Victoria Ranger to make ceramic tiles for the Lyrebird trail at Mason's falls in the Kinglake National Park.

In 2018 Grade 3-4 students worked on a project with the support of Murrindindi Shire Council to make the ceramic tiles that were installed at three sites along the Kinglake Heritage Trail. Leanne worked with the three Kinglake schools, Kinglake Primary, Middle Kinglake Primary and Kinglake West Primary on their designs, tile painting, firing and installation. The students were very enthusiastic and they relished the challenge.

Kinglake West students painted flora from the Kinglake Ranges area, Kinglake Middle painted the birds, feathers and nests because they are close to the sky and Kinglake Primary School painted the fauna of the region.

Kinglake students also created artworks for Kinglake's Lyrebird trail and the Kinglake Heritage Trail under the guidance of Kinglake West Primary teacher and artist, Leanne Mooney.



The Blacksmith's Tree

KRA artists also contributed to 'The Blacksmiths Tree' project - a 9-metre high metal tree created by casting gum leaves from stainless steel and copper. The tree was created by blacksmiths in response to the devastating fires of Black Saturday and stands as a memorial to the people who were lost, the tireless work of the firefighters, relief workers and communities impacted by the 2009 bushfires.



Amanda Gibson, Anna Murphy, Lee McGill, Peter Drofenik (Welding teacher and Tree Welder), Lyn McNairn and Gay Chatfield in their welding gear for the Blacksmith's Tree

'Connect' – The Dunalley Project – 2013

The 'Connect' project was a series of workshops held in various communities to create objects to donate to the Tasmanian bushfire-affected communities. This was a way for the community to come together and create, to talk and feel good about helping others. The people of Tasmania were at the stage where they needed winter warmers and words of encouragement from people who understood their situation.

The 'Connect' project evoked a positive response from the Kinglake Ranges communities. It brought different people together and allowed the communities to move forward, reflect on past events and appreciate their present situation. It enabled the arts group to plan and prepare for future events and encouraged many in the Kinglake Ranges community to participate. The 'Connect' Project became part of the community's recovery, another step in the healing process and part of the Kinglake Ranges journey

Participants:

Flowerdale Quilt & Craft Group
Kinglake Knit Knack Group
Kinglake Craft Guild
Knitting Nannas of Toolangi
The Hive Craft Group of Laurimar
Kinglake Ranges Neighbourhood House
Toolangi Castella District Community House
Flowerdale Community house
Whittlesea Township Community House
Building Community Wellness Locally - the Whittlesea team

Supporters:

Spotlight, K Mart South Morang, Bag Co, Fibre Fusion and Caz Rogers expert Felter



From Ashes to Art



Street Art – 2014

KRA conducted 'Street Art' workshops for local youth at the Ellimatta Youth Space

Kinglake Street Art Workshops



FREE WORKSHOPS
13-19 yrs

Come and try your hand at some Street Art

with Artist **Jasper Killick**

Jasper is a young vibrant artist studying at RMIT that will take you into the world of Street Art and help you to produce your own piece of art to take home

**WEDNESDAY EVENINGS
4.30 - 7 PM**

**JULY 16TH - AUG 6TH
AT ELLIMATTA YOUTH
SPACE, KINGLAKE**

No experience required, just your enthusiasm for Street Art.
All equipment and materials supplied.
Wear old clothing to protect yourself from paint.





Heritage Trail – November 2016

The Kinglake Heritage Trail was created in response to community discussions which took place after the Black Saturday bushfires. The idea of a Heritage Trail being established along the walking track from Kinglake to Kinglake West had been discussed in 2008 between the Kinglake Ranges Business Network, the Kinglake Ranges Arts Alliance and the Kinglake Historical Society.

Realising the benefits of the trail to the community, the three local groups had begun making enquiries regarding financial support when the 2009 fires occurred. The loss of life, landscape and historic buildings during the fires emphasised the need to preserve and acknowledge the heritage of the area.

In 2012 funding was obtained from Regional Development Victoria's *Putting Locals First Program*. A team of young architecture students walked the track and produced a document outlining suggestions for the project and then AECOM developed a more detailed design to work with.

With support from the Murrindindi Shire Council a Project Control Group was appointed comprising of four local residents representing the Business Network, Arts Alliance, Historical Society and Memorial Reserve groups together with Council representatives.

Sixteen signage sites were chosen and the Historical Society and Arts Alliance groups gathered the required information, photographs and artwork

The trail is a testament to all who have lived or worked in the Kinglake Ranges. The interpretative signage shows historical photographs plus artists' impressions of historical events/people/places for which there is a lack of clear photographic record, as well as representations of local flora and fauna, especially those that were endemic to the region but are now rare or have disappeared.

The project was completed and launched in 2016.

The artworks at the base of the three main sites were created by local school students under the coordination and guidance of artist and teacher Leanne Mooney.



Kinglake Ranges Heritage Trail

The Trail

The Heritage Trail features locally designed and crafted interpretative signage highlighting sites of historic, environmental and social significance in the Kinglake Ranges.

The trail along the north side of the main road follows the route of the timber railway, which operated from 1911 to 1926, along the central spine of the range.



The idea of a Heritage Trail being established along the walking track from Kinglake to Kinglake West was discussed in 2008 between the Kinglake Ranges Business Network, the Kinglake Ranges Arts Alliance and the Kinglake Historical Society.

A Heritage Trail would provide the opportunity to:

- . Display the history of the Kinglake Ranges.
- . Display the work of local artists.
- . Highlight the local flora and fauna.
- . Link the east and west sections of the district.
- . Involve the community in promoting and maintaining the walk.
- . Encourage tourists to visit and enjoy the area.

Realising the benefits of the track to the community, the three local groups had begun making enquiries regarding financial support when the 2009 fires occurred. The loss of life, landscape and historic buildings during the fires emphasised the need to preserve and acknowledge the heritage of the area.

In 2012, funding was obtained from Regional Development Victoria's *Putting Locals First* Program. A team of young architecture students walked the track and produced a document outlining suggestions for the project and then AECOM developed a more detailed design to work with.

With support from the Murrindindi Shire Council, a Project Control Group was appointed comprising of four local residents representing the Business Network, Arts Alliance, Historical Society and Memorial Reserve groups together with Council representatives.

Sixteen signage sites were chosen and the Historical Society and Arts Alliance groups gathered the required information, photographs and artwork.

The project was completed and launched in early 2016.



BOARDS AND LEGEND

- | | |
|--|---|
| <ol style="list-style-type: none"> 1. Trail Information and Map 2. Kinglake West Settlement 3. Railway and Businesses 4. Artwork 5. Kinglake West School and Church 6. Kinglake West Hall and CFA 7. National Park Rd., Farming & Timber Industry 8. National Park Rd., National Park 9. Pheasant Creek Store 10. St Teresa's Church 11. Morella Guesthouse 12. Beale Avenue 13. The Uplands 14. Extons Road, Farming & Timber Industry 15. Trail Information and Map | <ol style="list-style-type: none"> 16. Extons Road, School and Community 17. Extons Road, Memorial Hall M1-M6 Memorial Reserve 18. SEC Power Line 19. Frank Thomson Reserve 20. Frank Thomson Reserve, Tourist Map 21. St Peter's Church 23. St Mary's Church 24. Trust Reserve 25. Trust Reserve, SES 26. Trust Reserve, Pony Club 28. Kinglake, Name and Gold 29. Kinglake, Settlement and National Park 30. Kinglake, Businesses and School 31. Kinglake, Local Interest 32. Kinglake, Fires, Trail Information and Map |
|--|---|

Project Control Group:

Brad Quilliam (Kinglake Ranges Business Network)
 Deirdre Hawkins (Kinglake Historical Society)
 Peter Toyne (Kinglake Ranges Arts)
 Phillip Simpson/Ray Bartlam (Memorial Reserve)
 Murrindindi Shire Council Representatives.

Design of boards - Lee McGill of Kinglake Ranges Arts
 Construction of sites - Evergreen Civil
 Glass Panels - Axes Glass
 Timber supplied by Recycled Timber Specialists Pty Ltd



32B

All photos with permission of Kinglake Historical Society

All artwork images supplied by Kinglake Ranges Arts

'Respect & Remember' Exhibition

Ten-Year Anniversary of the 2009 Black Saturday Bushfires

The exhibition took place at Kinglake's Ellimatta Youth Inc. which was a post-bushfire space gifted to the Kinglake Ranges and funded by Rotary International (funding held by FRRR). The exhibition ran for five weeks from 24 January to 22 February 2019 and provided the artists and community of the Kinglake Ranges with the opportunity to exhibit artworks and treasured objects recovered from the 2009 bushfires. It also provided the opportunity for more recent members of the community to see for themselves the impact of the bushfires and the positive effect an arts led response to recovery can have on a community; to appreciate that the artists of the Kinglake Ranges were still providing comfort and messages of hope for a brighter future.

Items displayed in the exhibition:

- Photos.
- Artwork created in response to the fires.
- Displays and installations.
- Music & song.
- Stories & poetry.
- Memorabilia (personal items and other objects retrieved from the aftermath of the bushfires).
- Records (newspapers, photographs of before, during, and after the fires).

Participants and volunteers:

- Over 500 people visited the exhibition.
- 400 young people created leaves for the 'Tree for All Seasons'. This enabled a connection with the schools and linked the students and teachers with the exhibition through a conversation about the significance of what the leaves meant in remembering.
- General volunteers who helped out during the aftermath of Black Saturday and wanted to reconnect with communities from Queensland, Tasmania, New Zealand, Sydney and other places throughout Victoria.
- Exhibition volunteers.
- Locals.

- Ex Kinglake Ranges residents reconnecting with community.
- Local community groups such as CFA, SES, Firefoxes, Wominjeka Youth Group, as well as Victoria Police, Rotary and the Kinglake Craft Guild.
- Authors.
- Singers and songwriters.
- People driven to create something in response to the fires.

Events

Official Opening

- Murrindindi Shire Mayor – Sandice MacAulay.
- Kat Mear – Violinist.
- Matt Stonehouse - Interactive drumming.
- On the Couch with Kath – Interview with local author Melanie Harris-Brady.
- John Wyatt.
- Quentin Fogarty.

Community Day

- The Chocolate Lilies Choir.

Clay workshop Day

- Kinglake Scouts.
- Charcoal Workshop.
- Pastel Workshop.

ABC Radio – February 6

- Anthony and friend– violinist.
- Kath Stewart.
- Community Members.

BBC Radio

- Interview with ‘Respect and Remember’ exhibition curatorial staff.

Visits from Dignitaries

- Cathy McGowan MP.
- Cindy McLeish MP.
- Commissioner Ron McLeod AM and all staff from the Black Saturday Royal Commission.
- Shire CEO and Staff from Murrindindi Shire Council.

EXHIBITION

Respect and Remember The Kinglake Ranges Journey



The Kinglake Ranges community is hosting an exhibition which describes our journey since the 2009 bushfires.

On display are objects, stories, photos and artworks of significance in relation to our journey since Black Saturday.

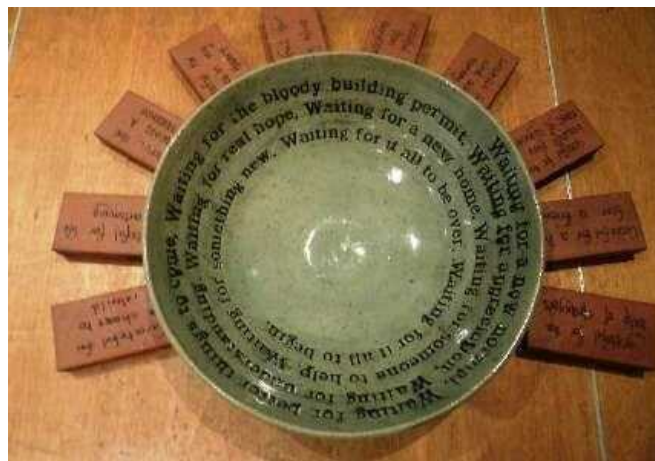
Individuals and community groups are invited to visit and appreciate these items which have been brought together as part of the exhibition:

'Respect and Remember - The Kinglake Ranges Journey'

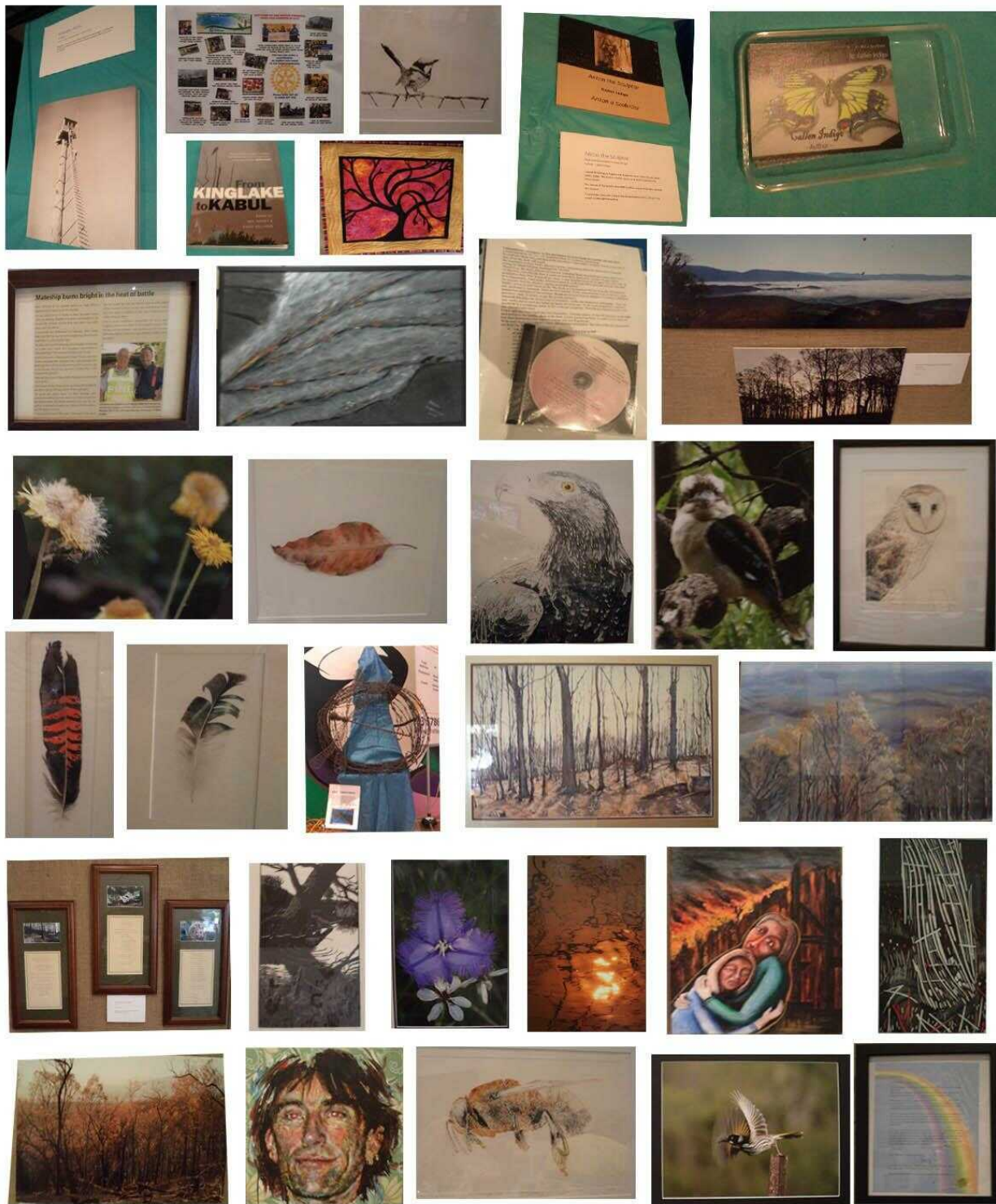
The exhibition is open from 24 January to 22 February.

Ellimatta Youth Building
94 Whittlesea-Kinglake Road, Kinglake

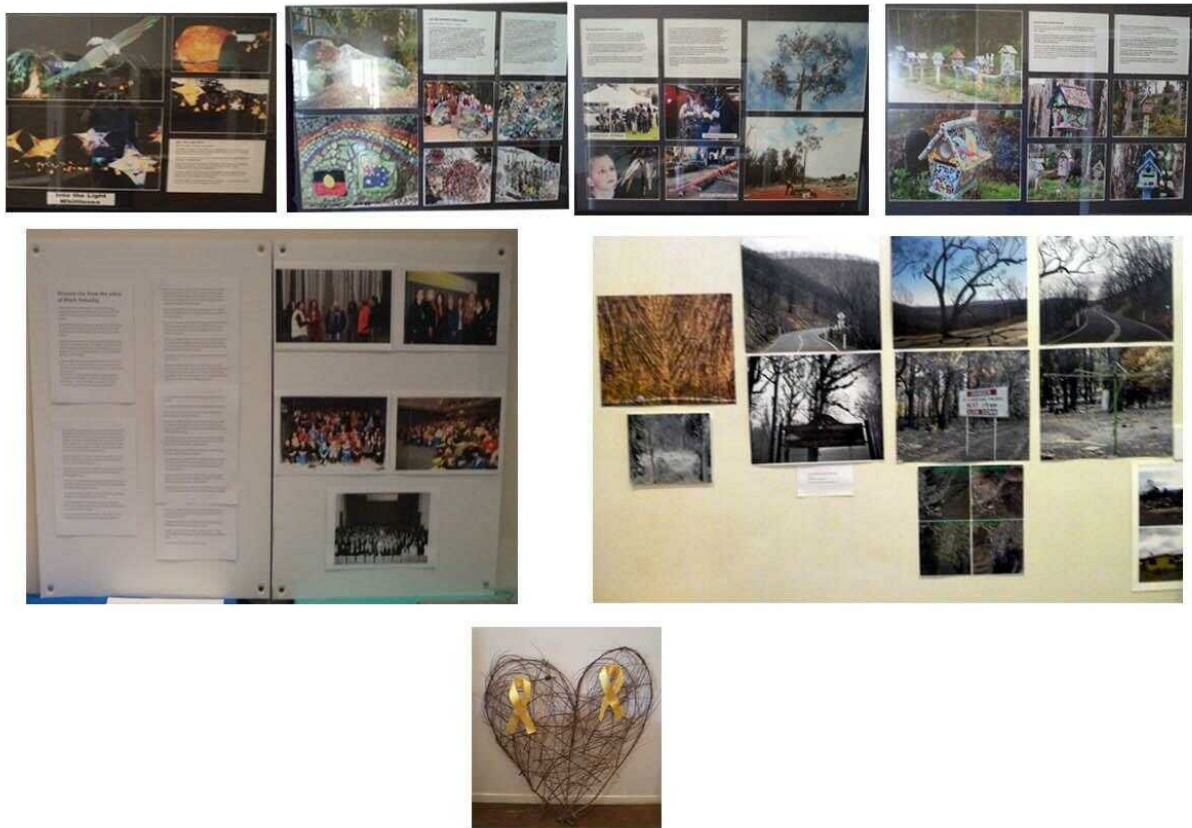
For further information email: respectandremember@gmail.com
or visit the Kinglake Ranges Neighbourhood House Facebook page.



Respect & Remember' Exhibits Cont.



Respect & Remember' Exhibits Cont.



Ellimatta Youth Space – venue for the 2019 Kinglake bushfires anniversary exhibition, 'Respect & Remember'